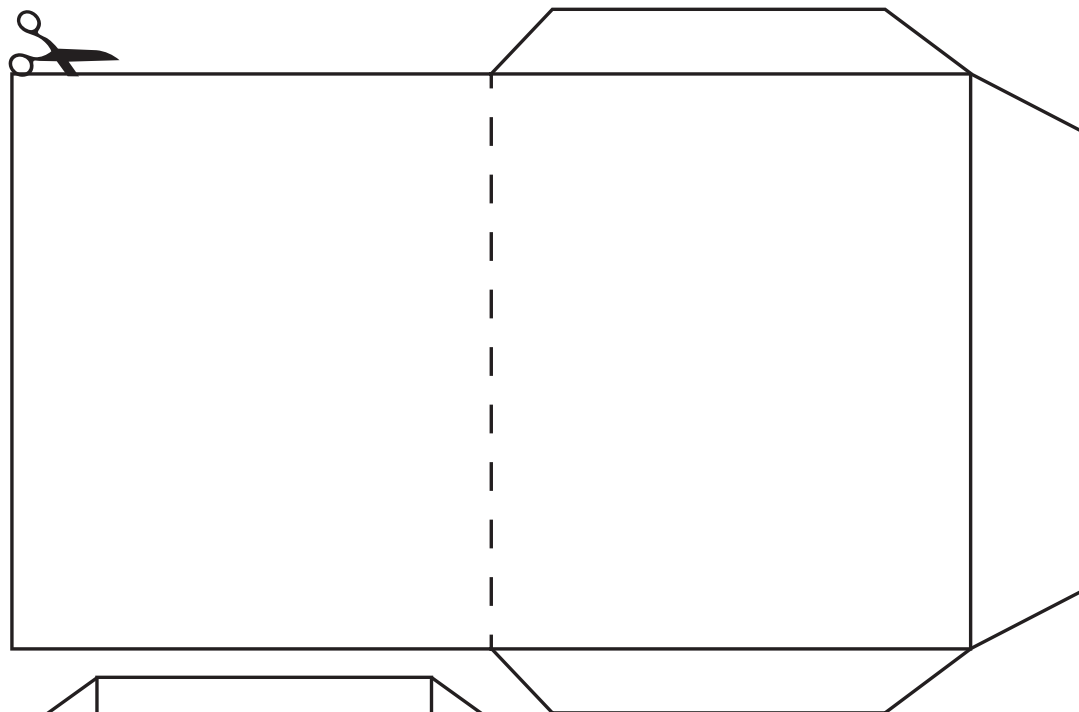


Bag and box

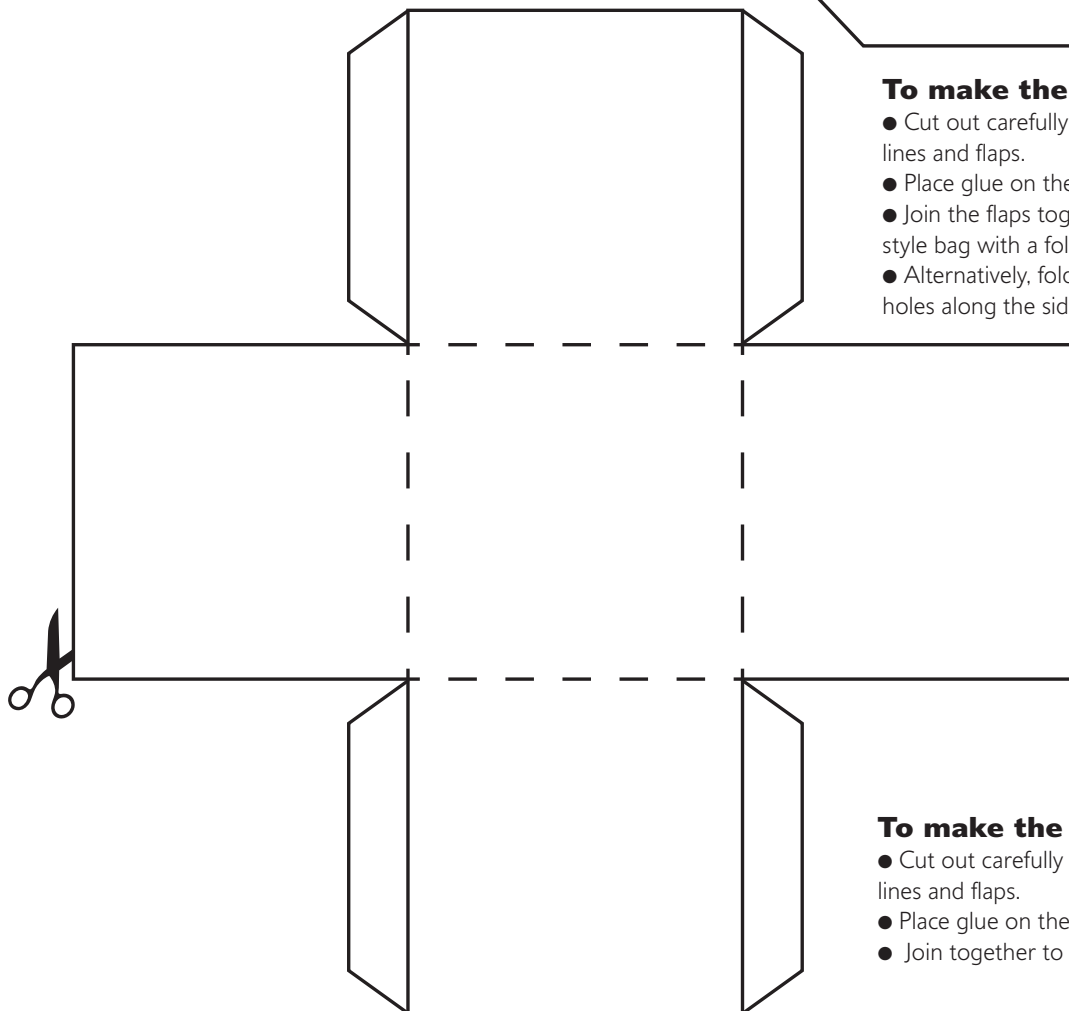
Use a template to create your own gift bag or box



To make the bag

- Cut out carefully and fold along the dotted lines and flaps.
- Place glue on the two side flaps.
- Join the flaps together to make an envelope-style bag with a fold down flap.
- Alternatively, fold the bag and punch a row of holes along the sides.

- Thread wool or string through the holes to fasten together the bag.



To make the box

- Cut out carefully and fold along the dotted lines and flaps.
- Place glue on the flaps.
- Join together to make a cube-shaped box.

