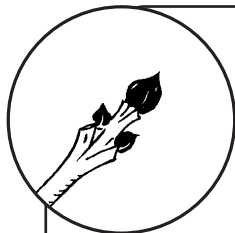


# I spy spring

Look for all these signs of spring between late March and June, depending on where you live in the UK. Record them at [www.naturedetectives.org.uk](http://www.naturedetectives.org.uk)



## Ash budburst

Ash trees have easy-to-spot black buds. Record budburst when the colour of the new green leaves can just be seen inside the swollen bud.

### Who

saw the event \_\_\_\_\_

### When

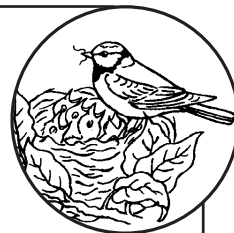
was it first seen \_\_\_\_\_

### Where

Place/postcode \_\_\_\_\_

## Blue tit feeding young

Look for adult blue tits with beaks full of insects – this is a sign that they are feeding chicks.



### Who

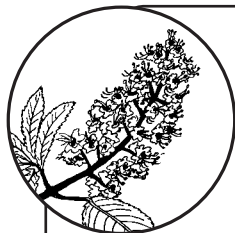
saw the event \_\_\_\_\_

### When

was it first seen \_\_\_\_\_

### Where

Place/postcode \_\_\_\_\_



## Horse chestnut first flower

Horse chestnuts have beautiful white flowers that grow in groups like upright pyramids. It is time to record when you see the first individual flower in one 'pyramid' open.

### Who

saw the event \_\_\_\_\_

### When

was it first seen \_\_\_\_\_

### Where

Place/postcode \_\_\_\_\_

## Swallow first seen

Swallows arrive in the UK from Africa in late spring. Look for the long forked tail and red throat with cream underside.



### Who

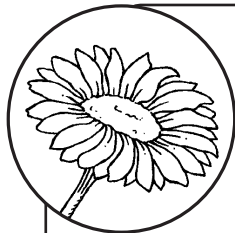
saw the event \_\_\_\_\_

### When

was it first seen \_\_\_\_\_

### Where

Place/postcode \_\_\_\_\_



## Ox-eye daisy

Look for the first flowers opening on this large wild daisy. It is common on roadsides and grassland.

### Who

saw the event \_\_\_\_\_

### When

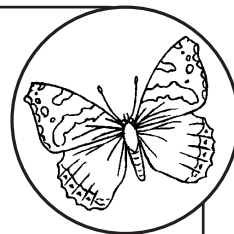
was it first seen \_\_\_\_\_

### Where

Place/postcode \_\_\_\_\_

## Red admiral butterfly

Look for the dark brown wings with red bands. The butterfly should be actively flying outside when you record it.



### Who

saw the event \_\_\_\_\_

### When

was it first seen \_\_\_\_\_

### Where

Place/postcode \_\_\_\_\_

To see colour pictures of each species to help you spot them go to [www.naturedetectives.org.uk/identify](http://www.naturedetectives.org.uk/identify)

